

Henniez Water Bottling Factory

Chair of Dr. Josep Lluís Mateo
ETH Zürich, Autumn 2009

Site: The project is located near the small village of Henniez, Switzerland. The factory itself is situated in the contemporary arcadia; countryside consisting of the protective forest, agricultural fields, and habitations situated along the tortuous roads.

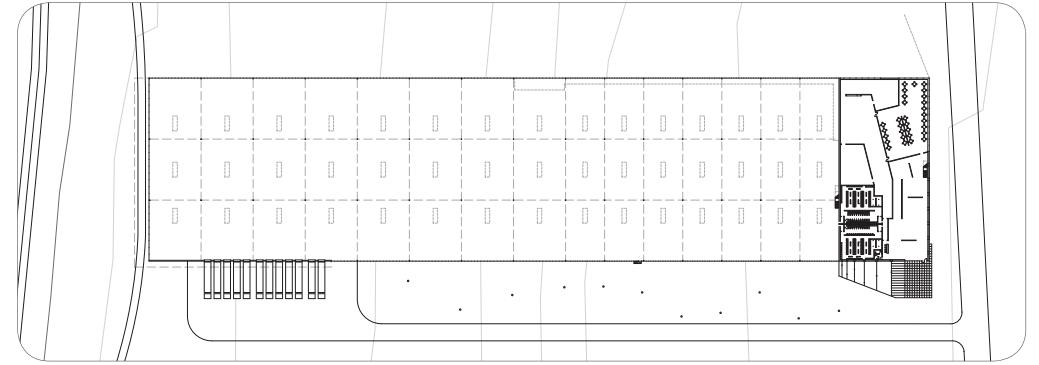
Program: A 240,000 ft² water bottling factory to replace the aging facility of the Henniez Company, an established mineral water producer in the Canton Vaud of Switzerland.

Concept: Though the bottling process has become increasingly more technological, the Henniez Company goes to great lengths to ensure that all bottled water is unaltered from the time it naturally rises to the surface level at the factory's source (1 km away) to the time it is eventually consumed. This business model is the core of the Henniez Company.

The built response replicates the pureness of this concept by creating a simple, flexible production space with functional site connections to rail and roadway infrastructures. The façade treads as lightly as possible on the rolling landscape.

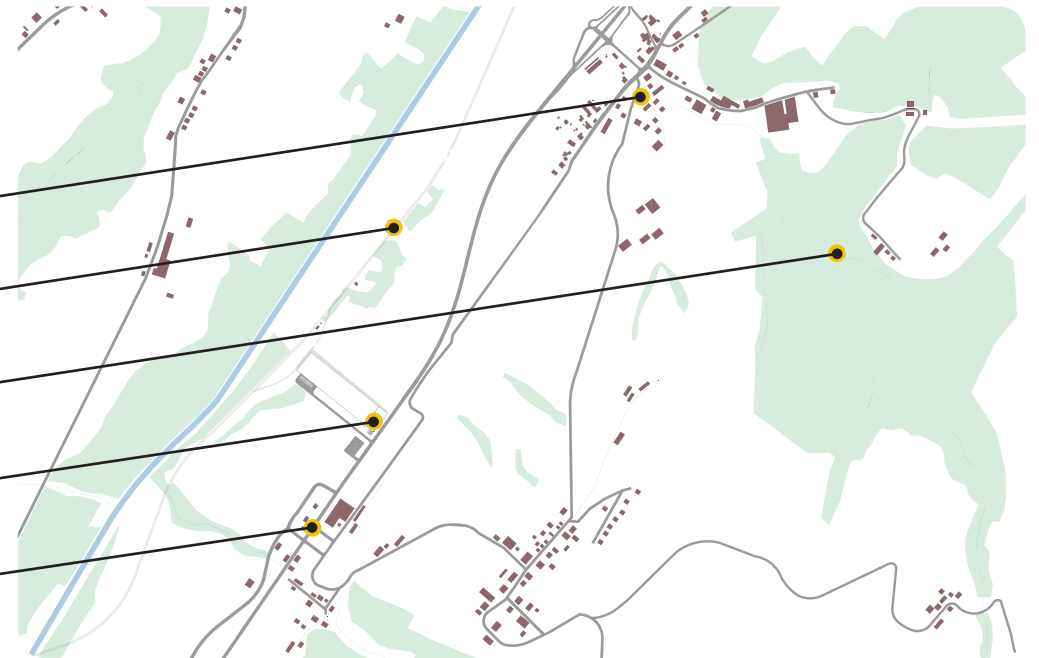


Existing Henniez bottling facility

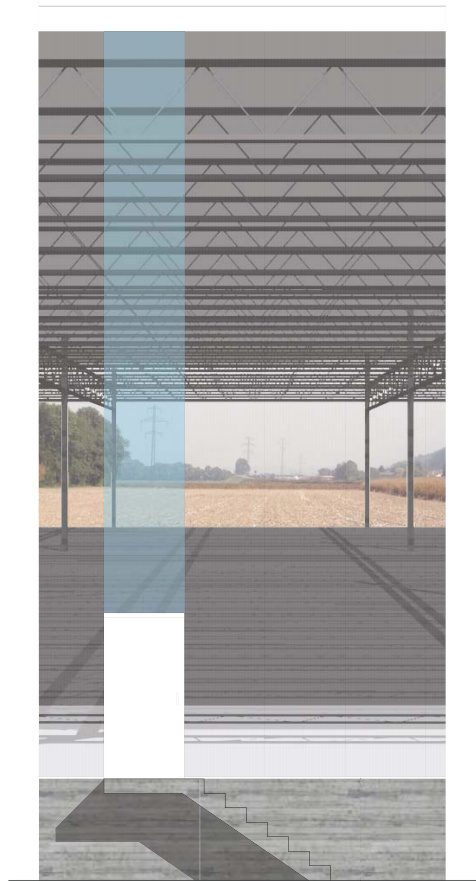
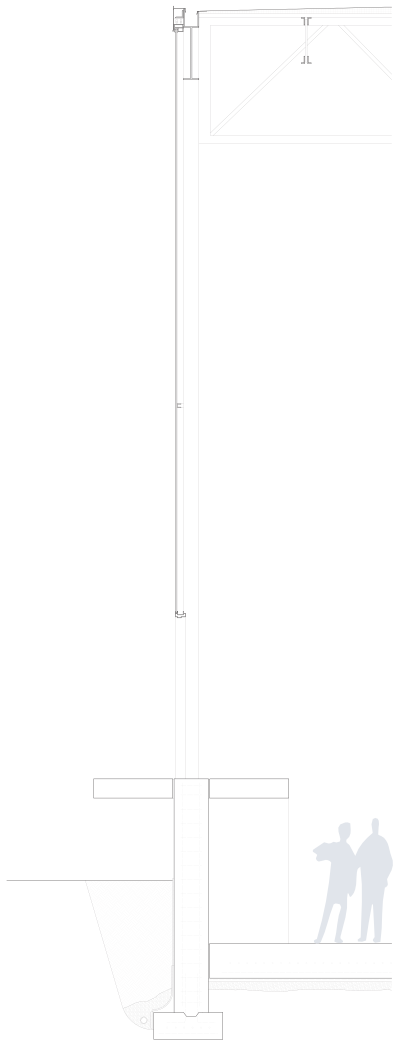


Floor plan

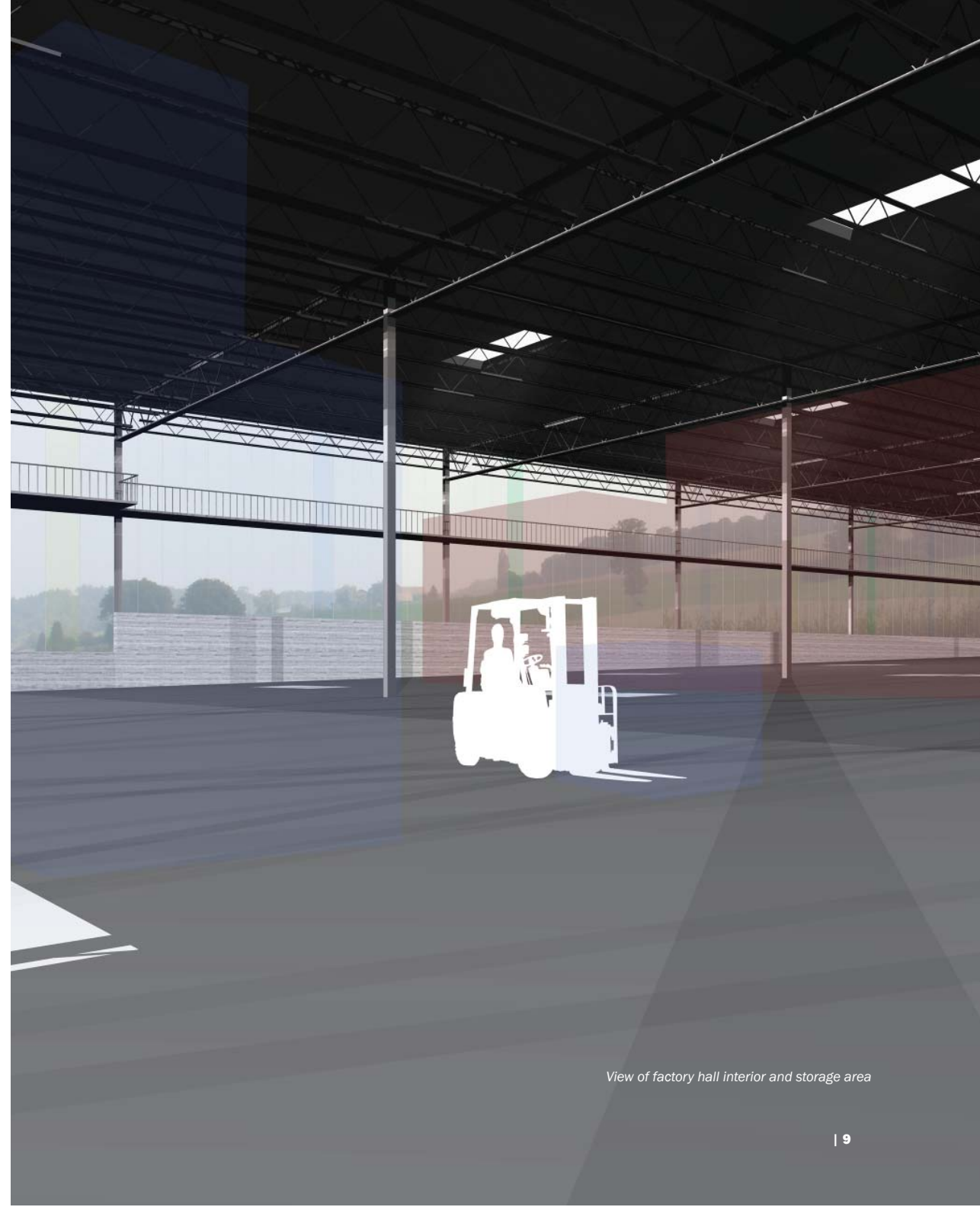
- Village of Henniez** — The small village in the French speaking region is closely linked with the company
- Rail Connection** — A crucial SBB freight and passenger rail is connected directly to the factory
- Proposed Henniez Factory** — The factory hall and corporate headquarters sit in a rolling agrarian landscape
- Mineral Water Source** — Water naturally percolates to surface in a small forest 1 kilometer east of the factory
- Roadway Connection** — Route 1 is the primary vehicular connection to the factory and larger district of Broye-Vully



Site plan



Typical wall section and detailed elevation



View of factory hall interior and storage area