

Museum for the U.S.S. Undine

Assistant Professor Ted Shelton
University of Tennessee, Fall 2008

Site: The project is located in the New Johnsonville State Park in East Tennessee. The site overlooks the Tennessee River and includes the remains of a Confederate redoubt which was used as an earth shelter during the course of battle.

Program: A 25,000 ft² museum and research center to house the remains of a recovered Civil War era gunboat, the USS Undine. Residences and related programming for visiting scholars is also included.

Concept: The design solution stems from research into the protagonist of the Undine’s tale, General Nathan Bedford Forrest, who was responsible for capturing and later scuttling the ship. As highly controversial (though highly influential and effective) battlefield leader, General Forrest’s role in history is often debated and presents a clear example of the importance of impartial research and dissemination.

The built response illustrates this through the structural system, material selection and detailing, and the interior exhibit design. Conversely, the project’s siting, the organization of program, and the design of the façade systems are used to selectively allow and deny specific views to and from the landscape — an attempt to further depict the effects of bias distortion.

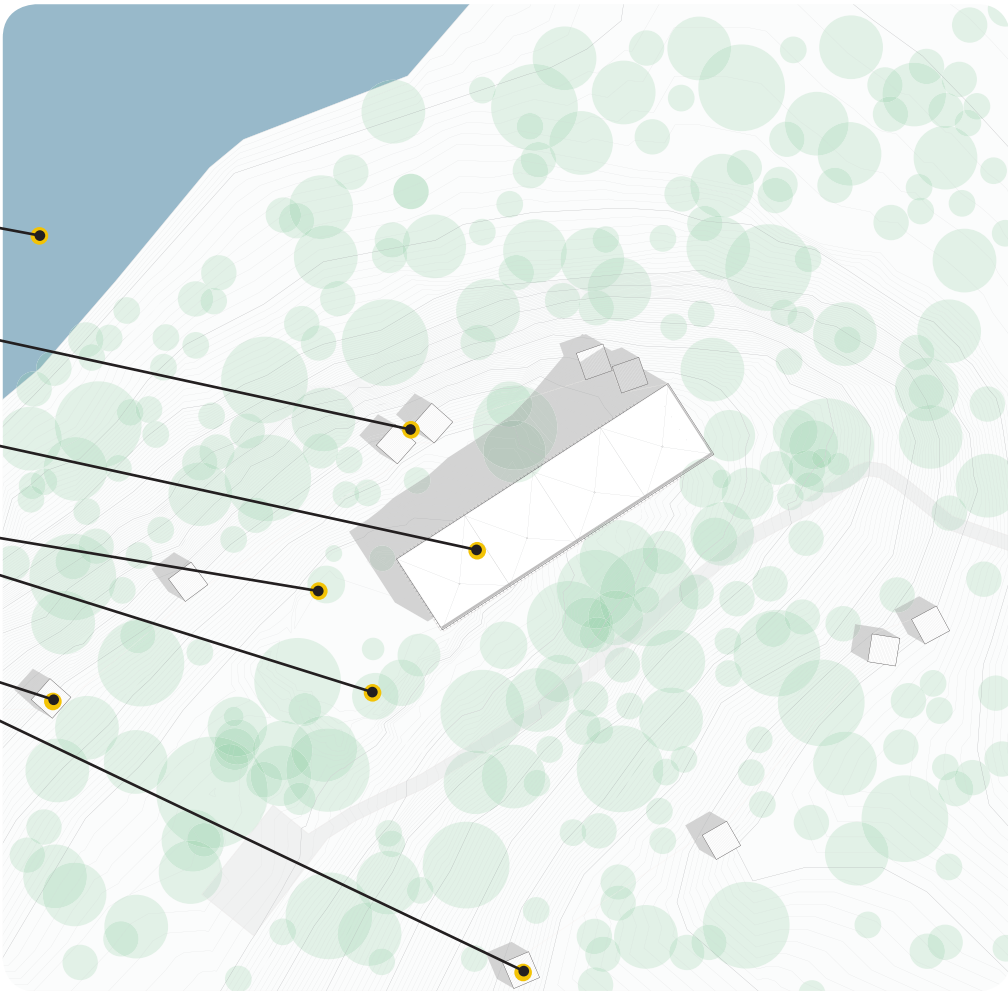
Tennessee River
Located at the bottom of a large ridge, the U.S.S. Undine was scuttled here

Joint Researcher Residences
Multiple residence types were developed and located around the large site

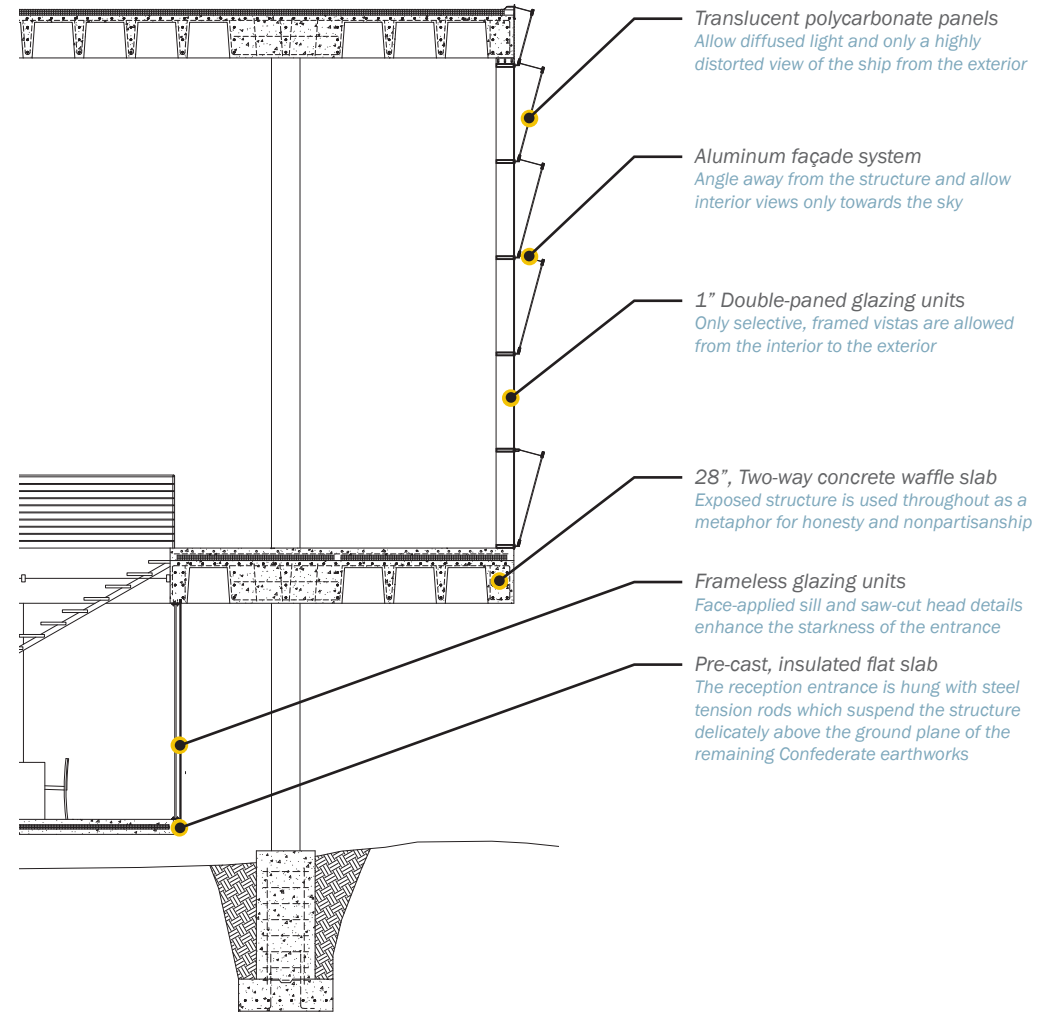
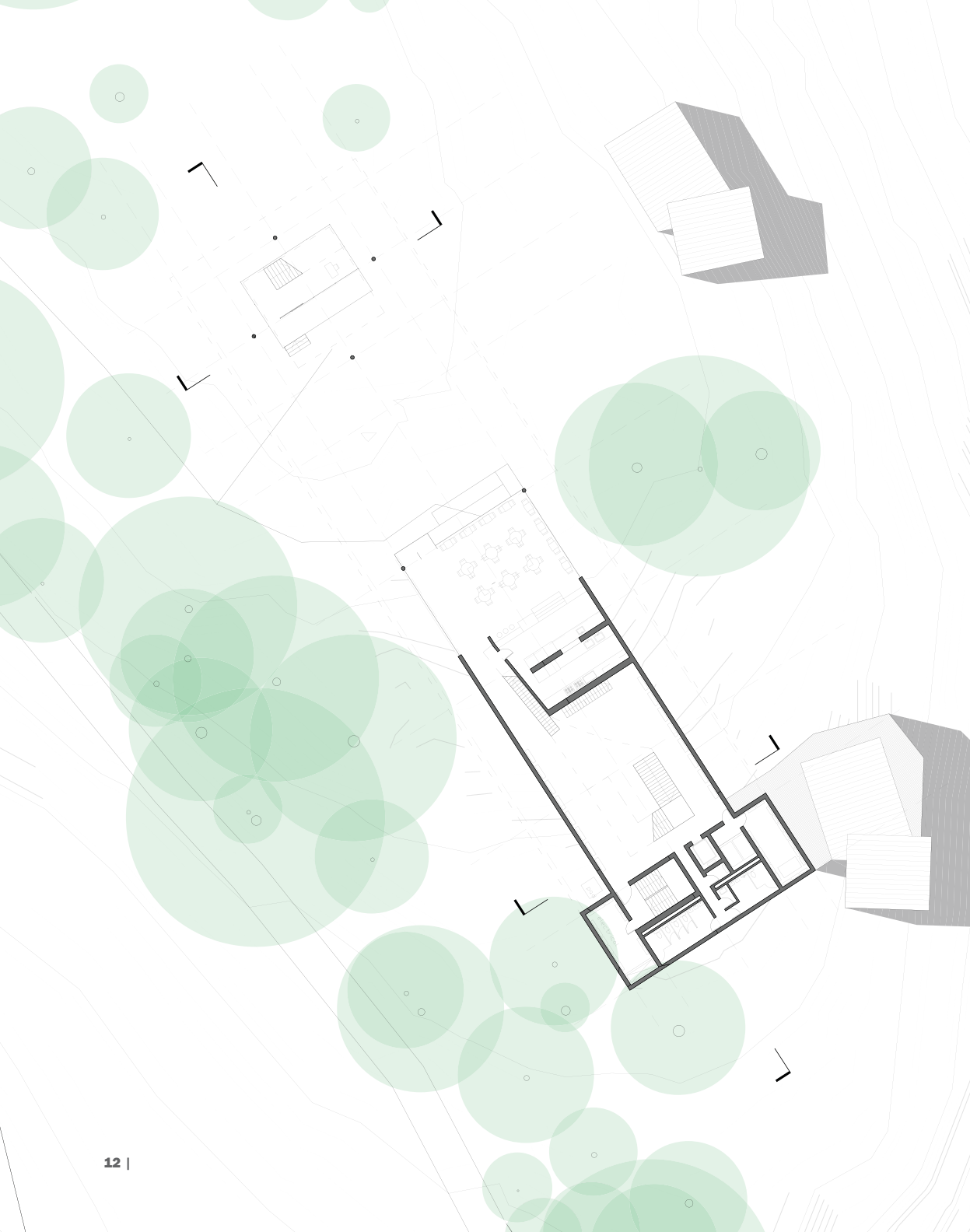
Museum and Research Center
The museum is sited over the confederate redoubt and at the crest of the ridge

Confederate Redoubt
The eroding remains of the protective earth-works must be preserved

Isolated Residences
Several residences are detached from the primary center and isolated in the landscape



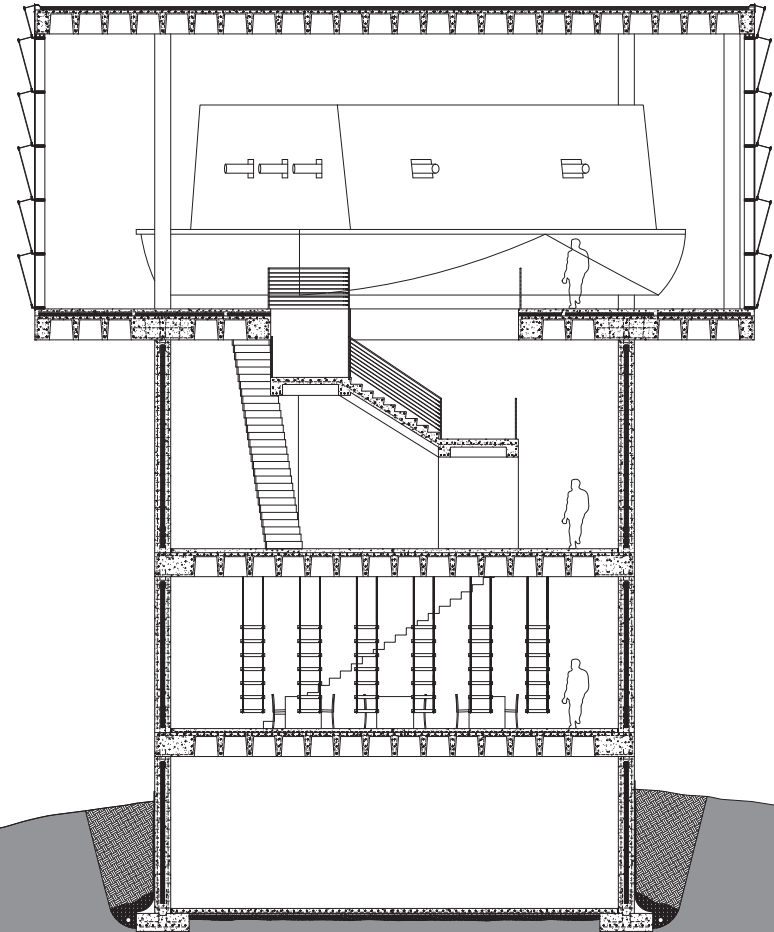
Site plan of New Johnsonville State Park



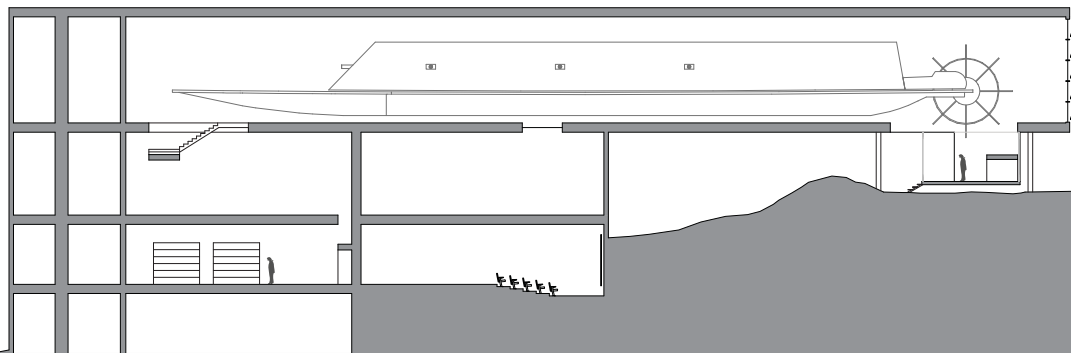
Ground level plan (left)
Transverse section through redoubt and processional entry (above)



Interior of boat-room



Transverse section through boat-room, museum, and library



Longitudinal section through museum



Ceremonial entrance to museum drops into redoubt without engaging the ground