

## The Context of a Meal

Assistant Professor Tricia Stuth  
University of Tennessee, Fall 2006

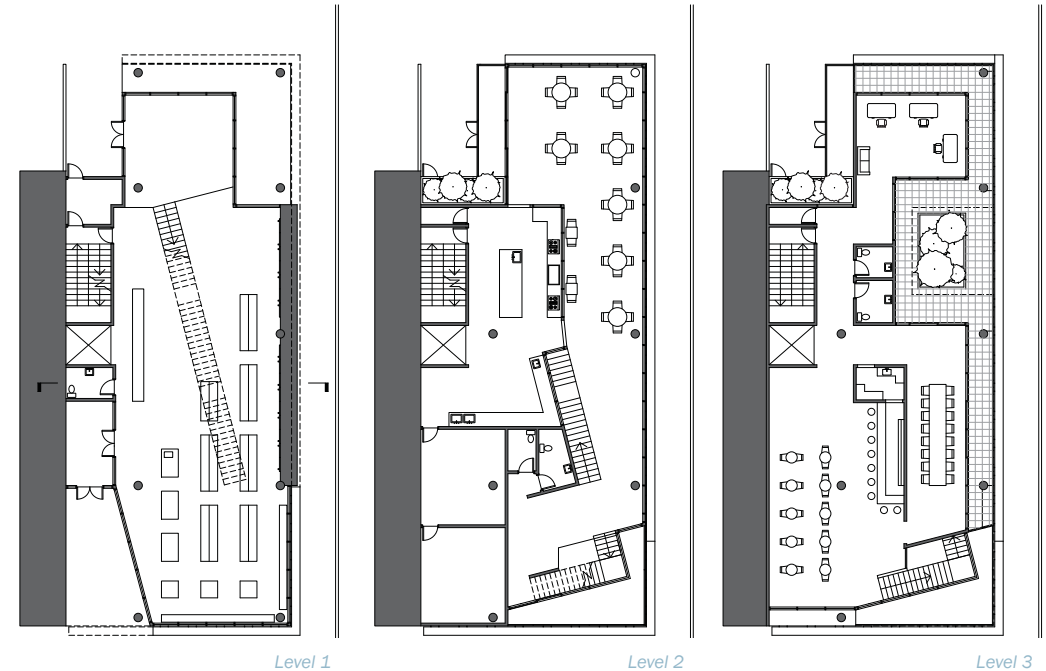
**Site:** The project is located the revitalized North Knoxville community of Knoxville, Tennessee. The urban corner site completes the block occupied by an adjacent row-house community.

**Program:** A 9000 ft<sup>2</sup> neighborhood market and café

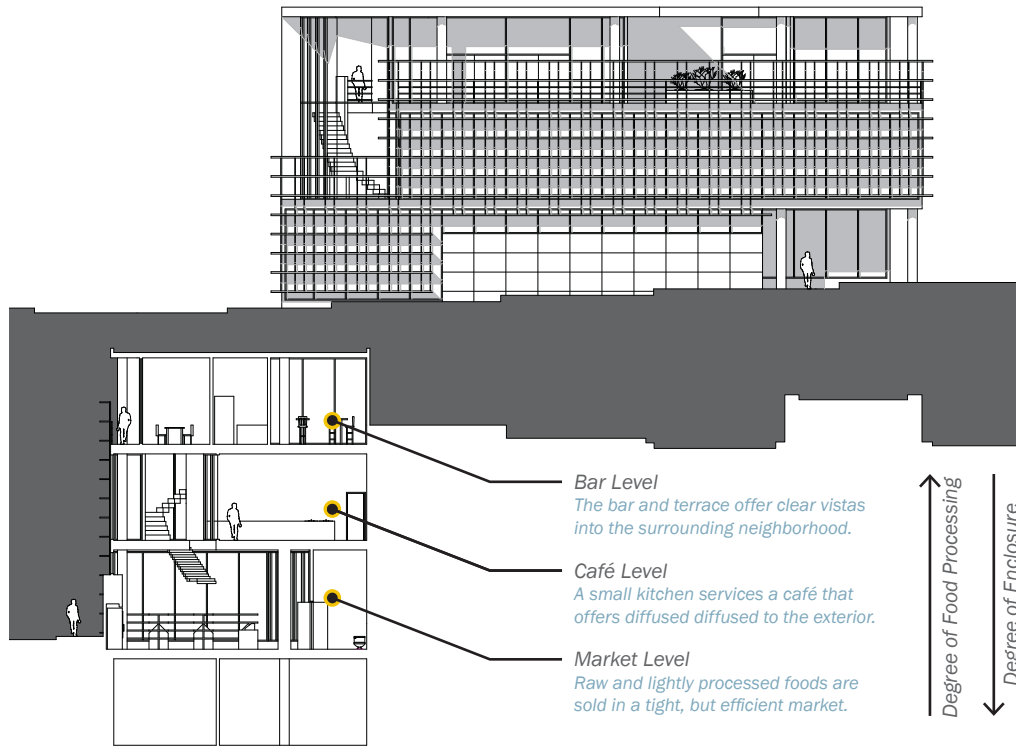
**Concept:** The façade is explored free of structural responsibilities and open to numerous expressions of interior, exterior, scalar, material, visual, and light conditions that further enhance the experience of programs and spaces. The procession of spaces is considered in relation to the process of “constructing” and consuming a meal. The façade system responds in a related manner.



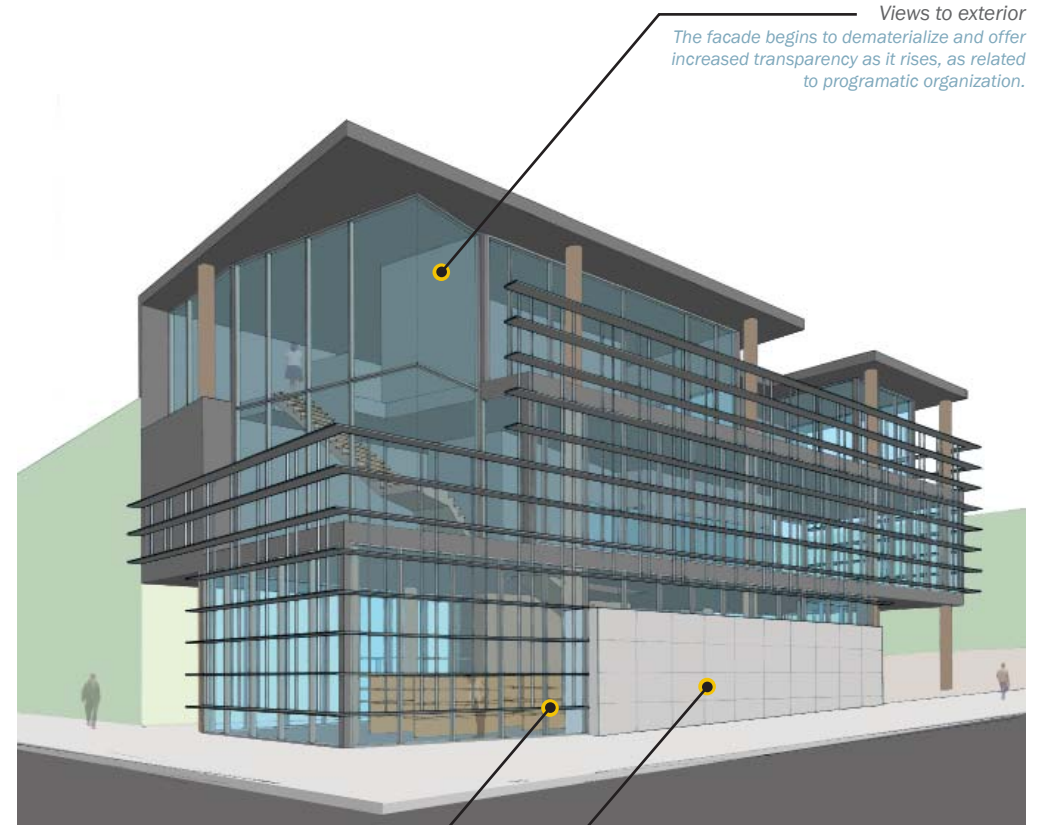
Study model (basswood and chipboard)



Selected for College of Architecture and Design's student-work archive  
Published in the College of Architecture and Design's student work journal: *CURRENT*, Vol. I  
Rendering published online as featured image for McGraw Hill Construction's "Student Showcase Gallery" since 2007



Primary elevation and transverse section



Perspective from street

**Aluminum façade panels**  
The system is designed to regulate interior light and enclosure. As the degree of food processing inherent in each programmatic level increases, the degree of enclosure inversely decreases and allows more views.

**Aluminum façade screen**  
The refrigerated area of the market creates a solid element on the façade to respond to the urban sidewalk and street condition.